

# Wi-Fi Internet Access Connection Procedure

## WINDOWS XP

The library has provided wireless network service to connect your personal laptop to the World Wide Web while at your public library. All you need is a laptop, wireless adapter (Wi-Fi) and web browser. (NOTE: Your web browser must have cookies enabled to access the internet.)

The following section describes in detail how to connect to a wireless network using the **network icon on the taskbar** in Windows XP. This document presumes that you have the appropriate permissions on your laptop to setup a wireless connection.

NOTE: Windows XP has additional security features that may periodically ask you if you want to continue making changes during the wireless setup process.

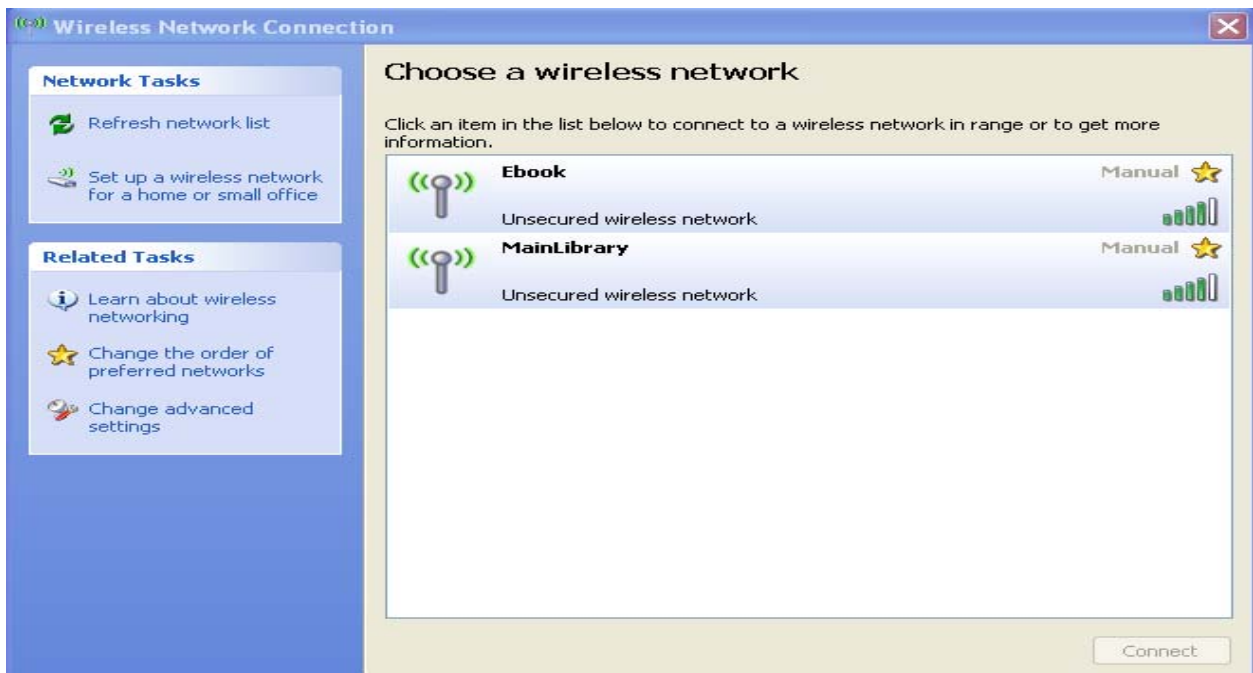
1. To get started, right click on the wireless icon in the taskbar.



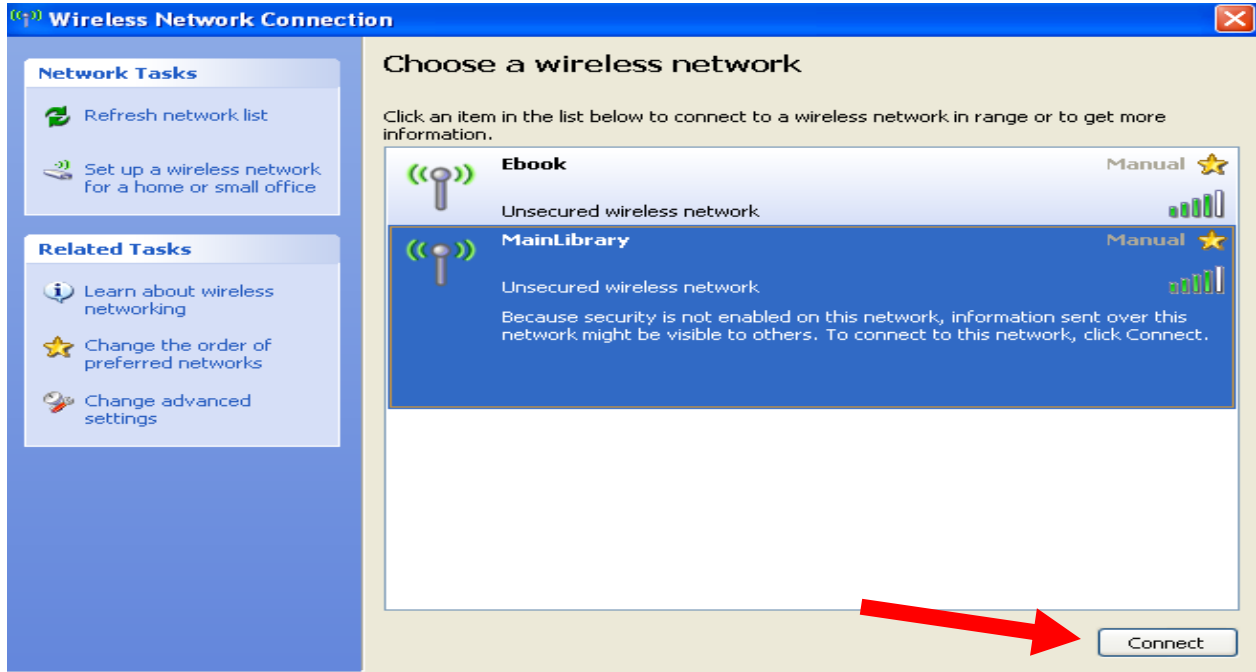
2. Click on **View Available Wireless Networks**



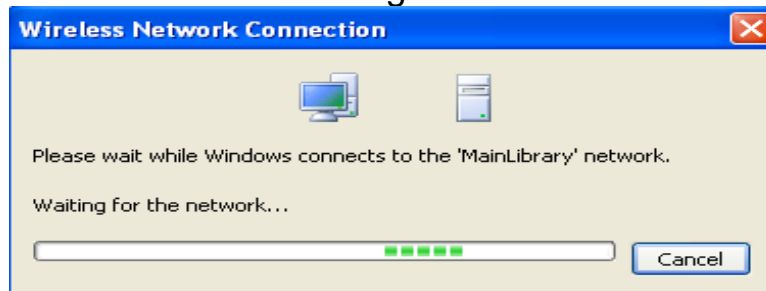
3. A list of wireless networks will be displayed. These are all the networks that are within range of your computer. Find the network that displays the **Library's Name** and click on it. (Ex. "MainLibrary")



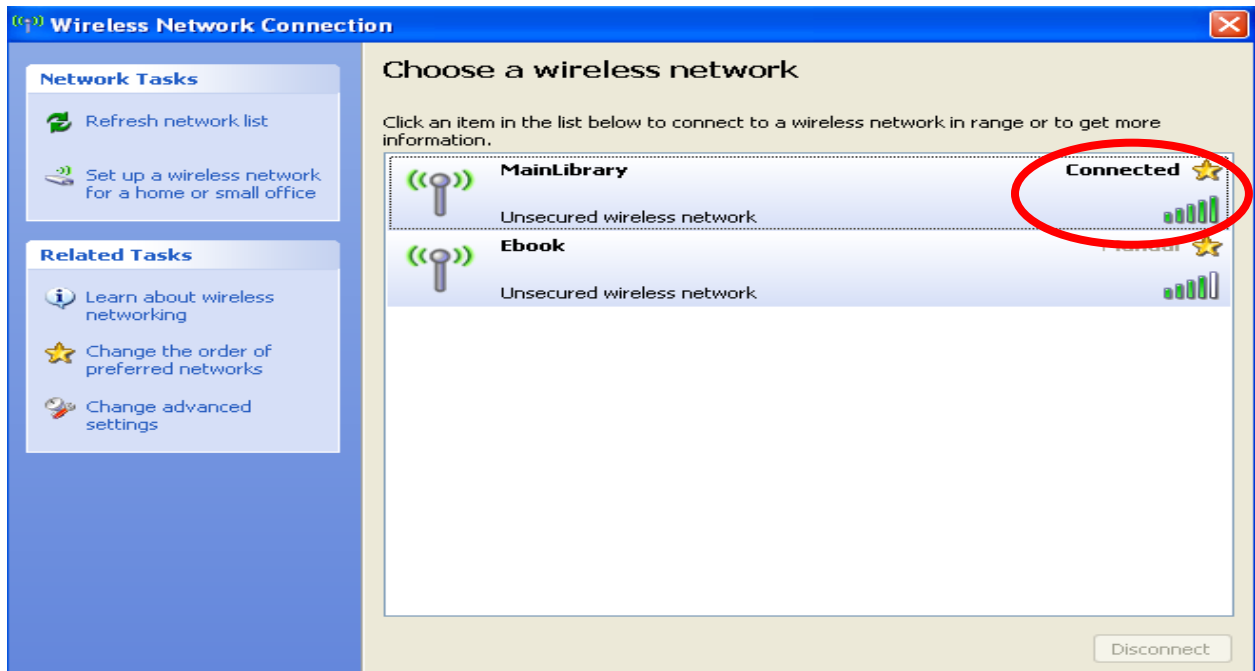
4. Now click on the **Connect** button.



5. Next you will see the wireless icon working to connect to the network.



Once the adapter is ready, you will see the window below showing you are now connected to the network. Close the Wireless Network Connection window.



6. Now that your connection has been established, open your internet browser.
7. You will be directed to the page shown below:

**Miami-Dade Public Library System**

**Visit us at <http://www.mdpls.org>**

You are in the Miami-Dade Public Library Network.  
To access the Internet click on "Continue".

---

Usted se ha conectado a la red del Sistema de Bibliotecas  
Públicas de Miami-Dade. Para acceder el Internet presione "Continue".

---

Ou nan rezo Bibliyotèk Piblik Miami-Dade la Pou jwenn aksè  
a entènèt la klike sou mo ki di "Continue" la.

---

**Prohibited activities**

- Copyright violations in which literary, musical or artistic work is used without permission from the owner with exclusive ownership.
- Utilization of e-mail or the Internet to distribute offensive, abusive, threatening, pornographic, sexually explicit or hate messages or images.
- Sending e-mail messages, images or sounds to others that are offensive to a reasonable person because the message contains lewd language or comments of an inappropriate personal nature, are intended to harass or annoy, or are otherwise offensive.
- Use of the Internet or e-mail to commit illegal, fraudulent or malicious activities

[Continue](#)

1

Click **Continue** to access the Internet.

## Limitations and Disclaimers

- The Library's wireless network is not secure. Information sent from or to your laptop can be captured by anyone else with a wireless device and the appropriate software, within three hundred feet
- Library staff is not able to provide technical assistance and no guarantee can be provided that you will be able to make a wireless connection
- The Library assumes no responsibility for the safety of equipment or for laptop configurations, security, or data files resulting from connection to the Library's network
- Printing is not available from your personal Laptop. If printing is desired you may sign up for one of the Library's PC'S or request a laptop, and print via the Library's print management system

<b>Library Name</b>	<b>(SSID) Wireless Network Name</b>	<b>Library Name</b>	<b>(SSID) Wireless Network Name</b>
Allapattah	➤ <i>Allapattah</i>	Miami Beach Regional	➤ <i>MiamiBeach</i>
Arcola Lakes	➤ <i>ArcolaLakes</i>	Miami Lakes	➤ <i>MiamiLakes</i>
Civic Center	➤ <i>CivicCenter</i>	Miami Springs	➤ <i>MiamiSprings</i>
California Club	➤ <i>CaliforniaClub</i>	Model City	➤ <i>ModelCity</i>
Coconut Grove	➤ <i>CoconutGrove</i>	Naranja	➤ <i>Naranja</i>
Concord	➤ <i>Concord</i>	North Central	➤ <i>NorthCentral</i>
Coral Gables	➤ <i>CoralGables</i>	North Dade Regional	➤ <i>NorthDade</i>
Coral Reef	➤ <i>CoralReef</i>	North Shore	➤ <i>NorthShore</i>
Country Walk	➤ <i>CountryWalk</i>	Northeast	➤ <i>Northeast</i>
Culmer/Overtown	➤ <i>CulmerOvertown</i>	Opa-Locka	➤ <i>Opa-Locka</i>
Doral	➤ <i>Doral</i>	Palm Springs North	➤ <i>PalmSprings</i>
Edison	➤ <i>Edison</i>	Palmetto Bay	➤ <i>PalmettoBay</i>
Fairlawn	➤ <i>Fairlawn</i>	Pinecrest	➤ <i>Pinecrest</i>
Golden Glades	➤ <i>GoldenGlades</i>	Shenandoah	➤ <i>Shenandoah</i>
Hialeah Gardens	➤ <i>HialeahGardens</i>	South Dade Regional	➤ <i>SouthDade</i>
Hispanic	➤ <i>Hispanic</i>	South Miami	➤ <i>SouthMiami</i>
Homestead	➤ <i>Homestead</i>	South Shore	➤ <i>SouthShore</i>
International Mall	➤ <i>IntlMallLibrary</i>	Sunny Isles Beach	➤ <i>SunnyIsles</i>
Kendale Lakes	➤ <i>KendaleLakes</i>	Sunset	➤ <i>SunsetLibrary</i>
Kendall	➤ <i>Kendall</i>	Tamiami	➤ <i>Tamiami</i>
Key Biscayne	➤ <i>KeyBiscayne</i>	Virrick Park	➤ <i>VirrickPark</i>
Lakes of the Meadows	➤ <i>LakesoftheMeadows</i>	West Dade Regional	➤ <i>WestDade</i>
Lemon City	➤ <i>LemonCity</i>	West Flagler	➤ <i>WestFlagler</i>
Litter River	➤ <i>LitterRiver</i>	West Kendall Regional	➤ <i>WestKendall</i>
Main Library	➤ <i>MainLibrary</i>		